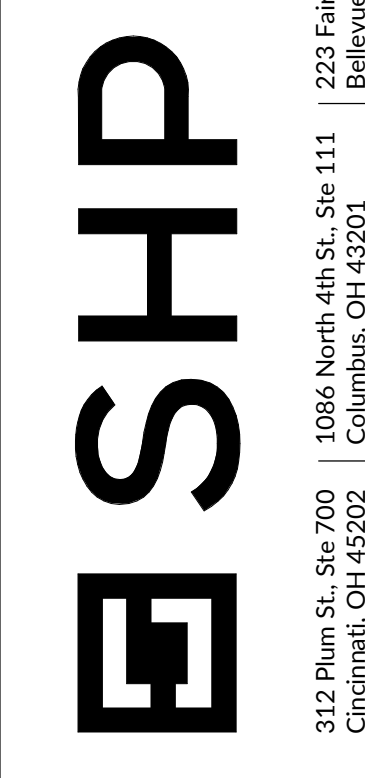


1 FIRST FLOOR OVERALL FLOOR PLAN  
 1" = 20'-0"

PRELIMINARY - NOT FOR CONSTRUCTION



312 Plum St. Ste 700  
 Columbus, OH 43202  
 614.222.2124

1066 North 4th St. Ste 111  
 Belleue, KY 41073  
 502.300.1234

MILFORD EXEMPTED VILLAGE SCHOOL DISTRICT  
**MILFORD MIDDLE SCHOOL**  
 5735 WOLFEN PLEASANT HILL RD., MILFORD, OH 45150

MILFORD EXEMPTED VILLAGE SCHOOL DISTRICT  
 1099 ST. RT. 131, MILFORD, OH 45150

ISSUANCES

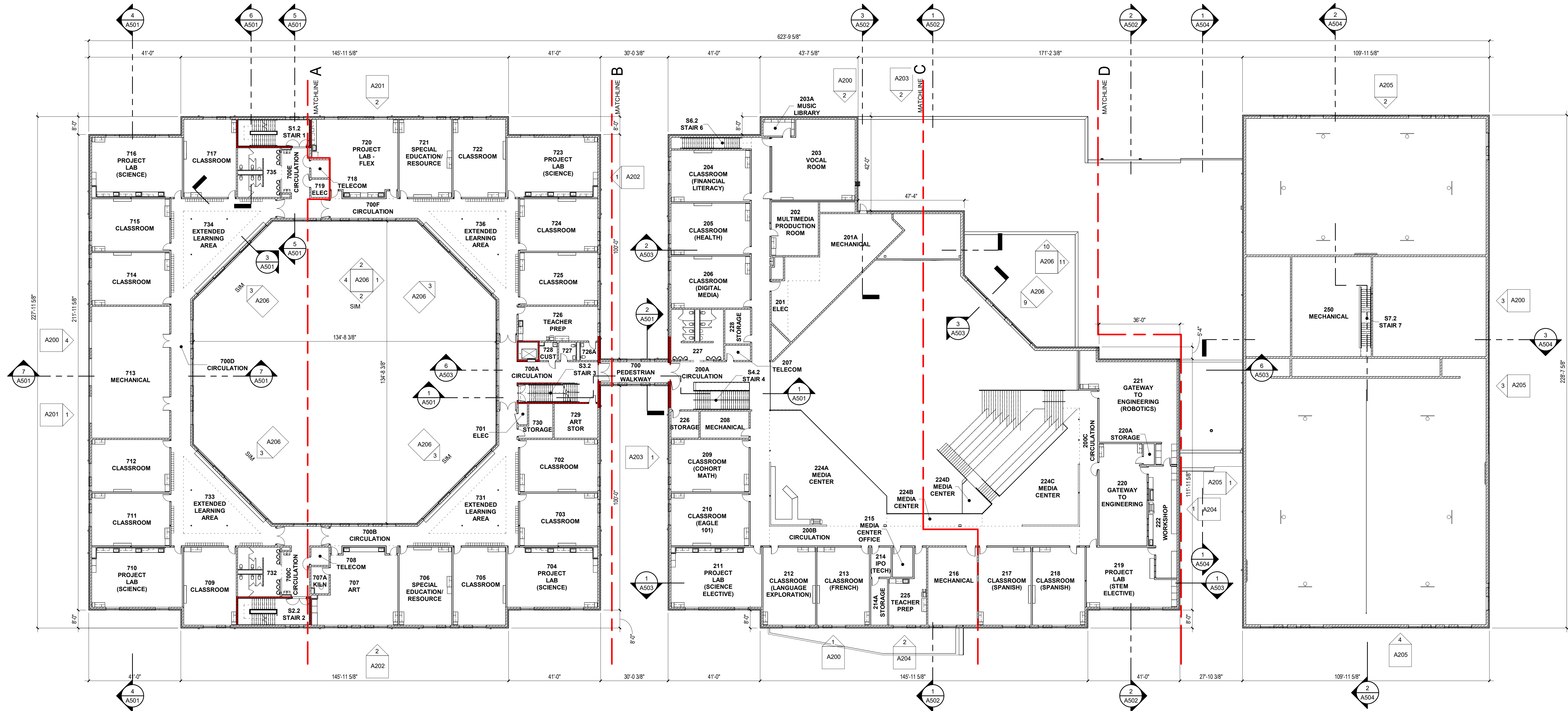
NO.	DATE	DESCRIPTION
09-09-22	SCHEMATIC DESIGN	
03-03-23	DESIGN DEVELOPMENT	

OVERALL FIRST FLOOR PLAN

COMM NO. 2022034.01

A051

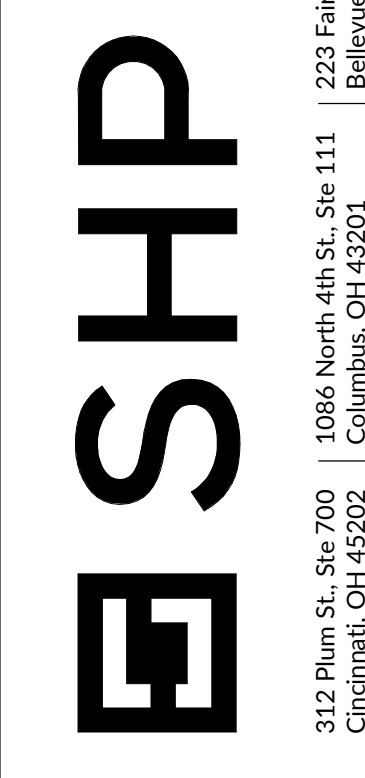




1 SECOND FLOOR OVERALL FLOOR PLAN  
 1" = 20'-0"

COPYRIGHT  
 STEVEN HANCOCK PALL, INC.  
 ALL RIGHTS RESERVED

**PRELIMINARY - NOT FOR CONSTRUCTION**



1066 North 4th St., Ste. 111  
 Columbus, OH 43201  
 614.222.2124

312 Plum St., Ste. 700  
 Cincinnati, OH 45202  
 513.591.1112

MILFORD EXEMPTED VILLAGE SCHOOL DISTRICT  
**MILFORD MIDDLE SCHOOL**  
 5735 WOLFEN PLEASANT HILL RD., MILFORD, OH 45150

MILFORD EXEMPTED VILLAGE SCHOOL DISTRICT  
 1099 ST. RT. 131, MILFORD, OH 45150

ISSUANCES

NO.	DATE	DESCRIPTION
09-09-22	SCHEMATIC DESIGN	
03-03-23	DESIGN DEVELOPMENT	

OVERALL SECOND FLOOR PLAN

COMM NO. 2022034.01

**A052**



























